

Print at 100 %
via multiple page
option ("Poster")
use cutting marks
if you have the option
in your printer


Seite anpassen und Optionen (i)

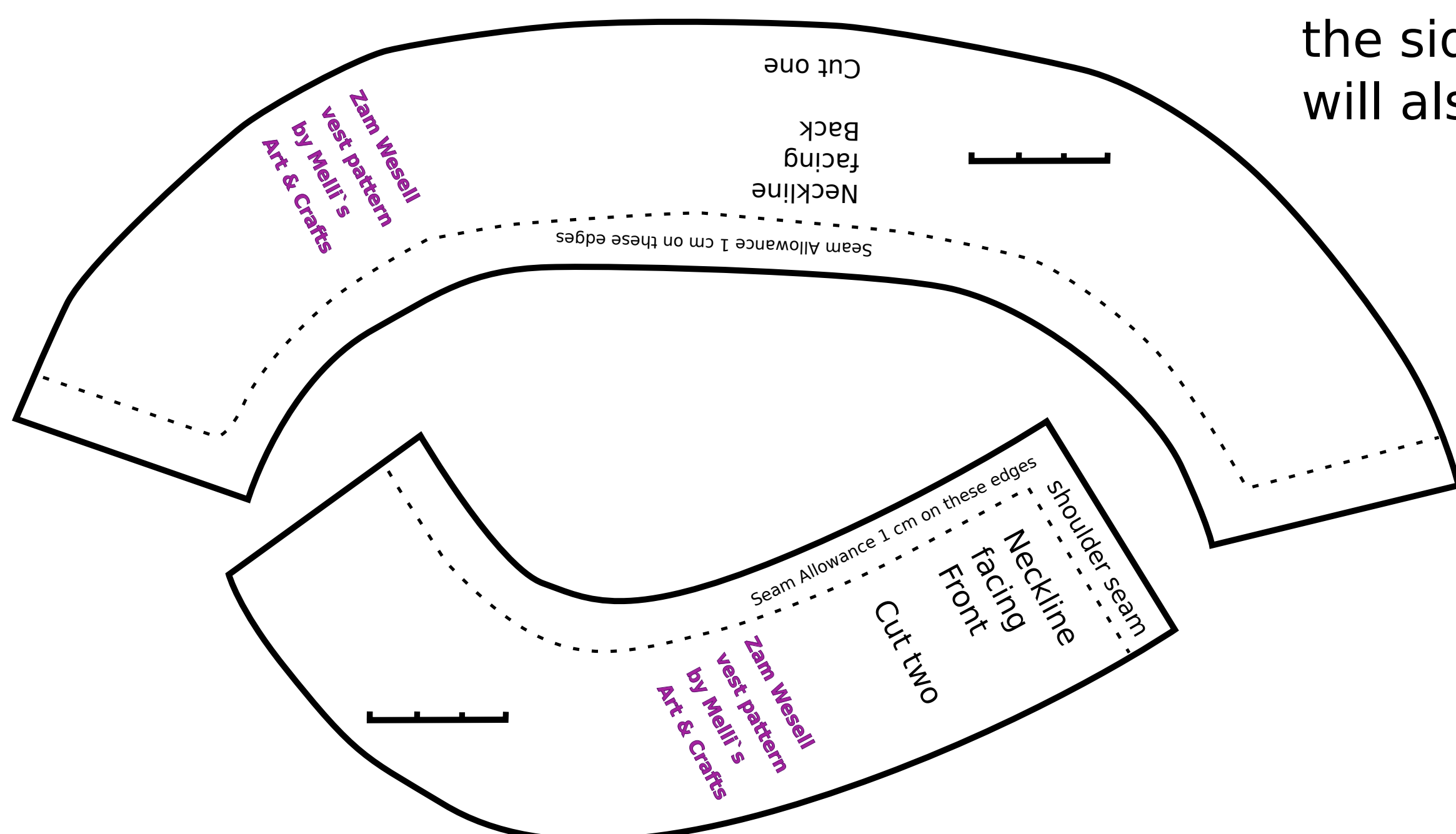
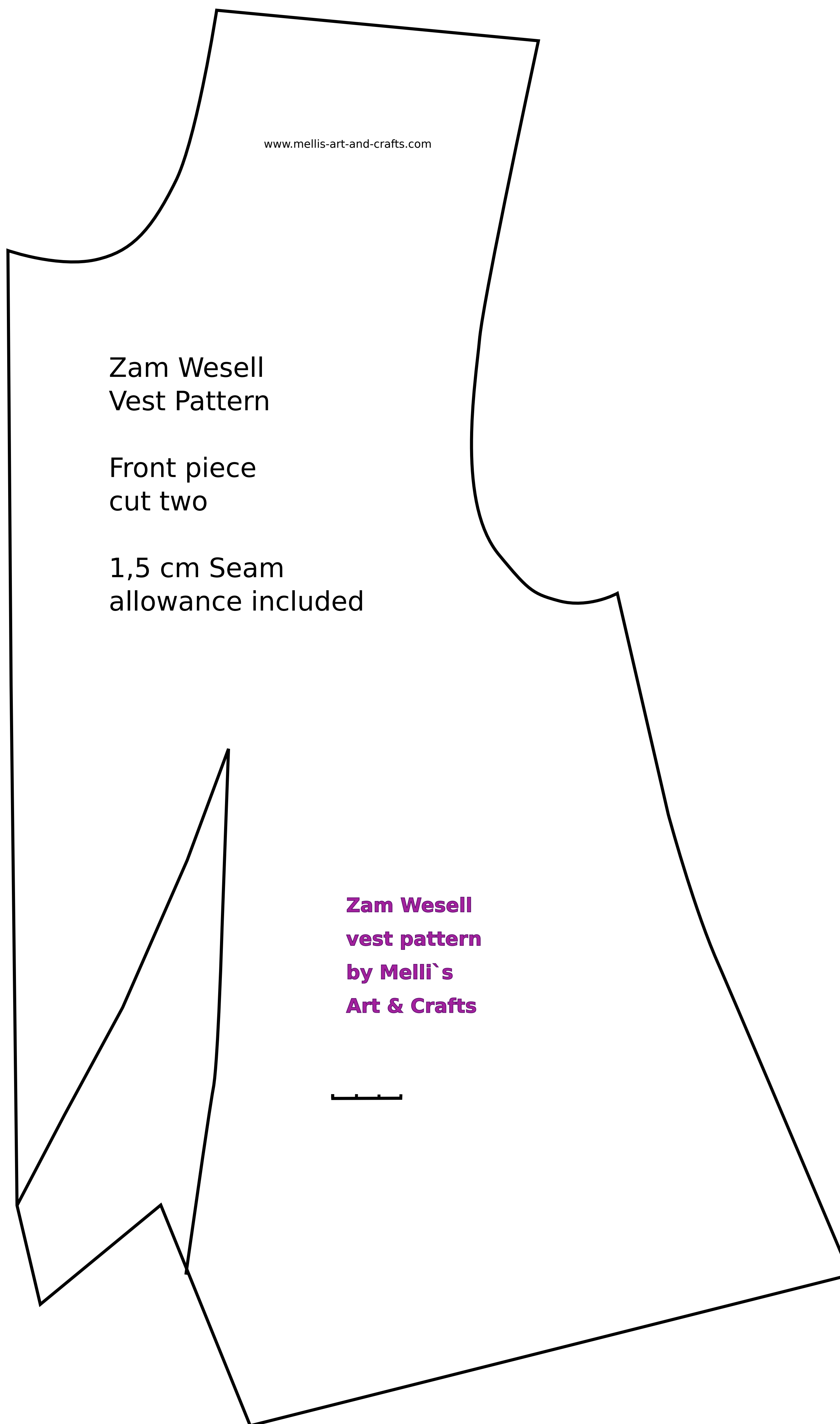
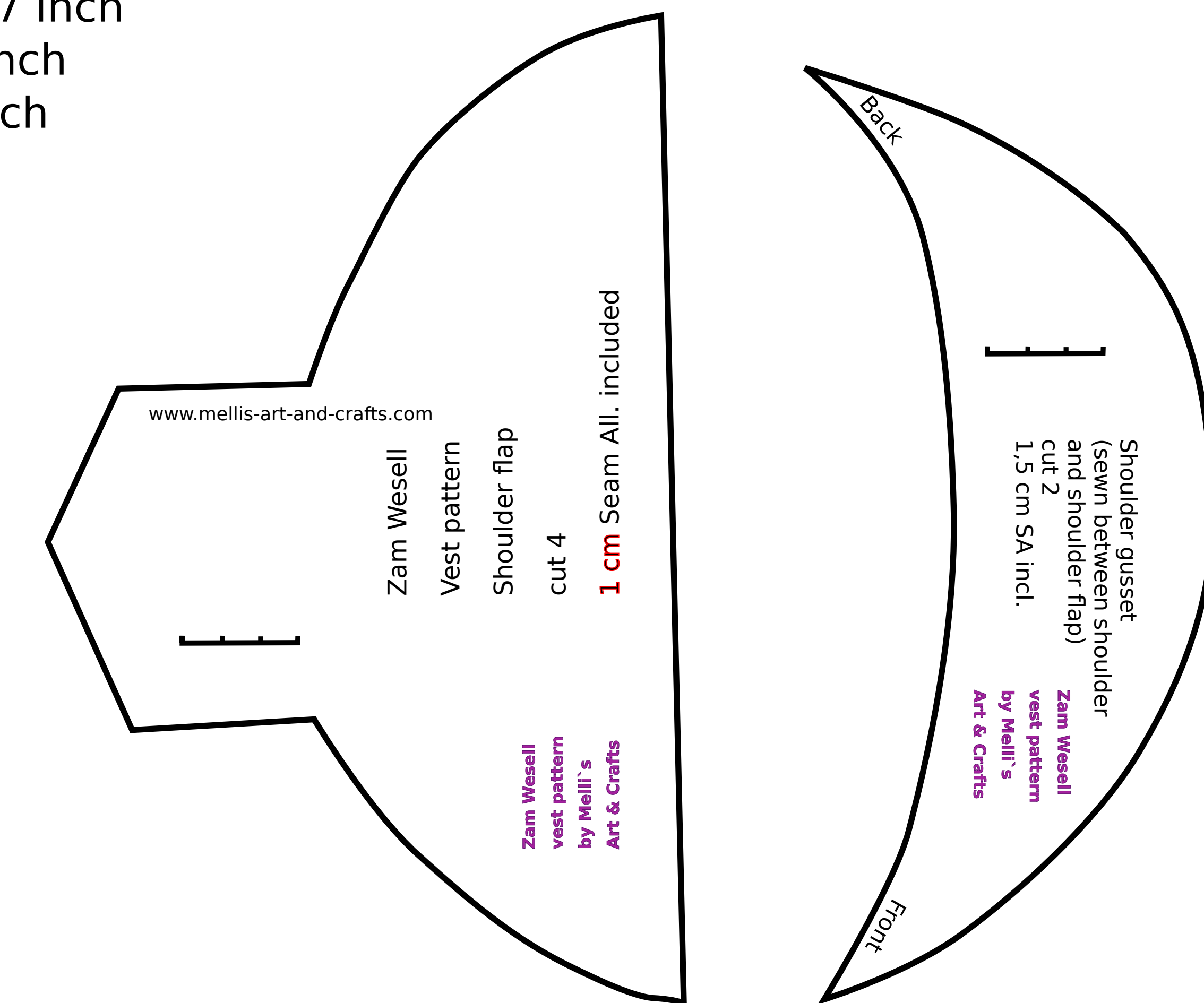
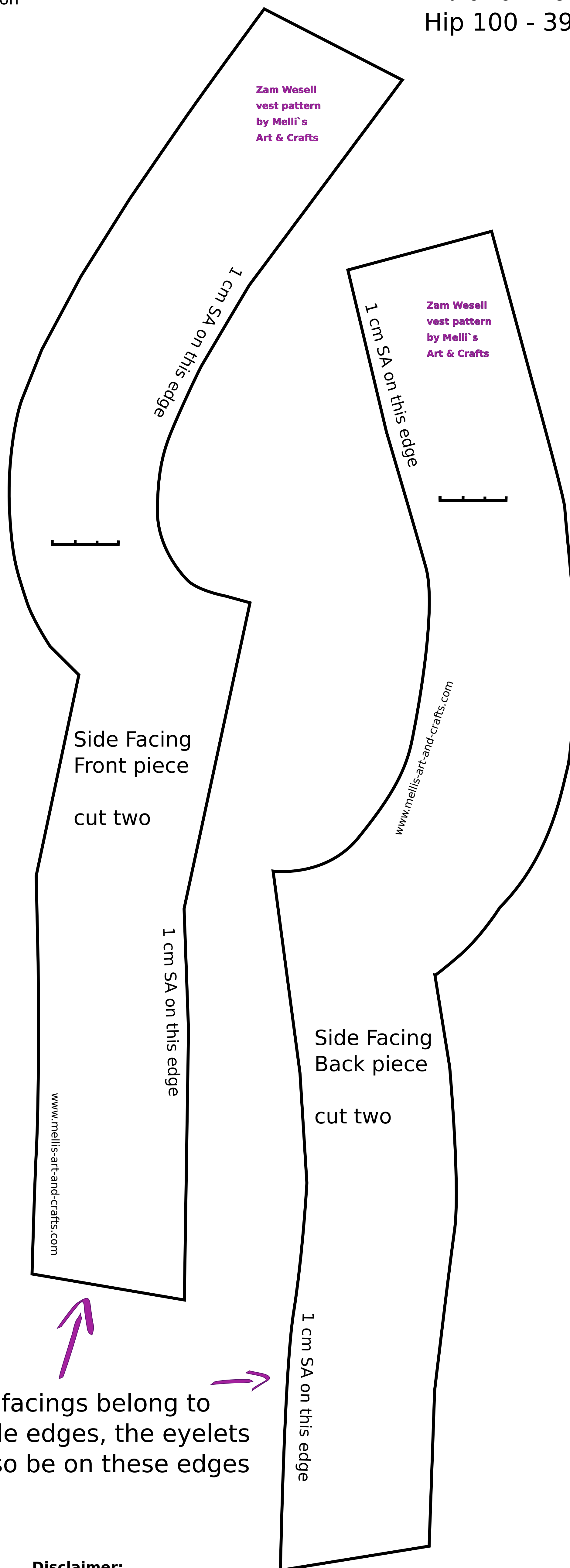
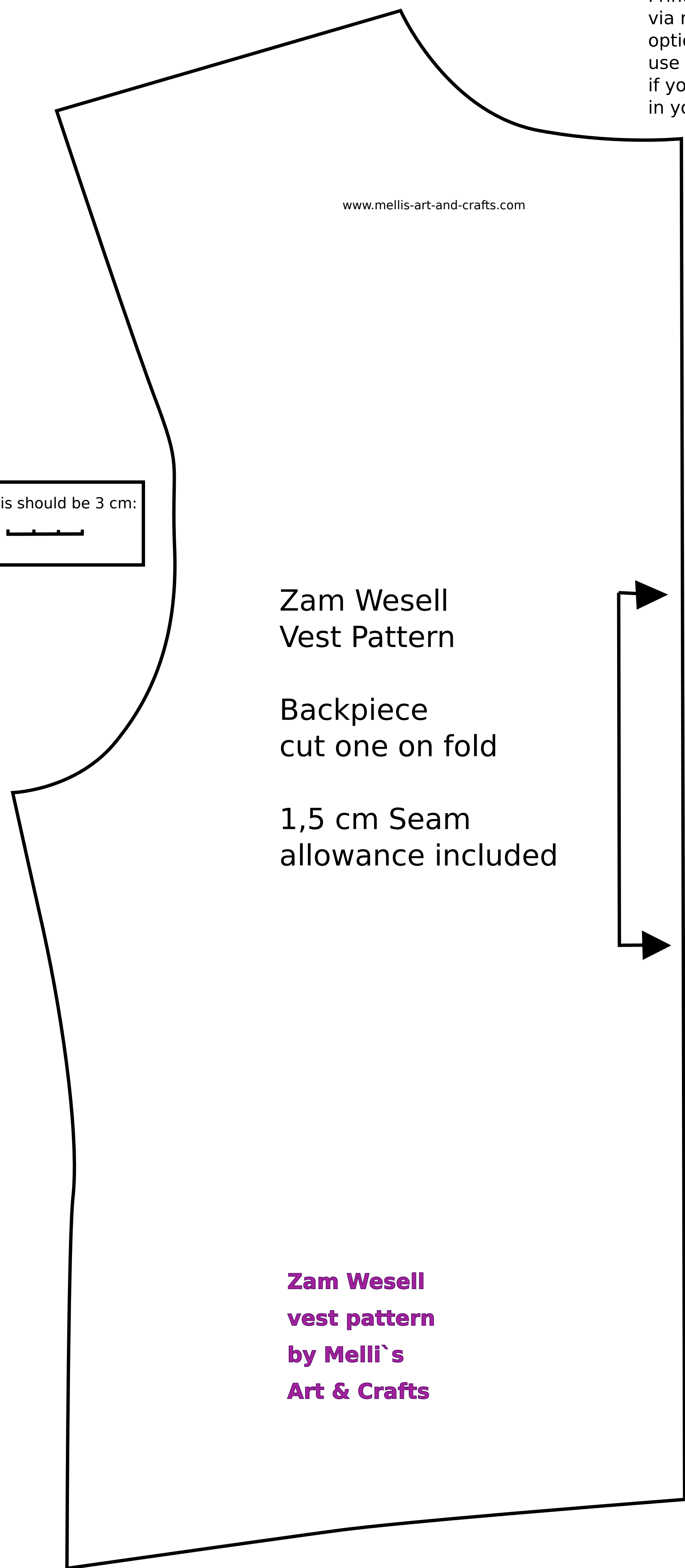
Größe: Poster Mehrere Broschüre

Teileskalerung: 100 % Überlappung: 0 mm

Schnittmarken Beschriftungen

Original pattern was made for size::
Bust 95 cm - 37 inch
Waist 82 - 32 inch
Hip 100 - 39 inch

This should be 3 cm:




These facings belong to
the side edges, the eyelets
will also be on these edges

Disclaimer:

I'm not a professional
pattern maker nor did I have
the option to test this pattern
for more than one person.

Please use this as a starting point,
compare it to your measurements
and make a Mock up before cutting into
your leather/fashion fabric.

use at your own risk :)

This pattern is not meant for commercial
use. Please don`t sell it or pass this off as your own.

Please send me a message for questions about the pattern
or if you may find an error. And please share your final
result, I`d love to see it!

Thank you!

Melli

No Seam Allowance on the lower edges of the facing,
because leather doesn`t fray
I glued the facings down inside my vest